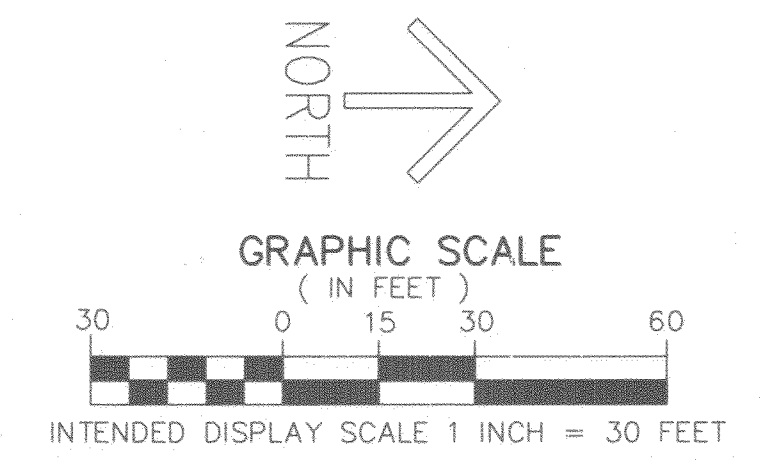
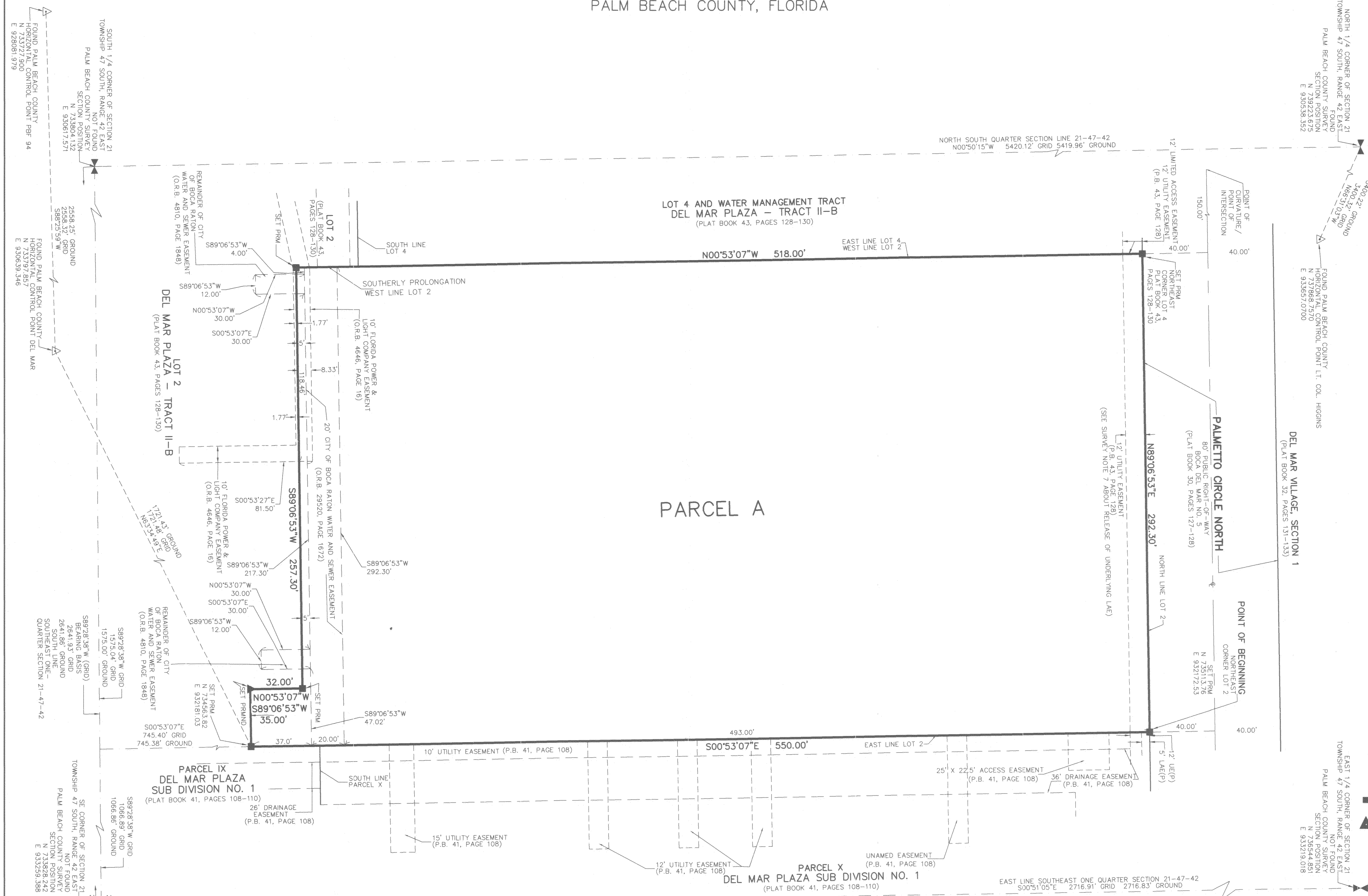


YOUNG ISRAEL OF BOCA RATON

BEING A REPLAT OF A PORTION OF LOT 2, DEL MAR PLAZA - TRACT 11-B,
AS RECORDED IN PLAT BOOK 43, PAGES 128 THROUGH 130 OF THE PUBLIC
RECORDS OF PALM BEACH COUNTY, FLORIDA
LYING IN SECTION 21, TOWNSHIP 47 SOUTH, RANGE 42 EAST,
PALM BEACH COUNTY, FLORIDA

THIS INSTRUMENT PREPARED BY
DAVID P. LINDLEY
OF
CAULFIELD and WHEELER, INC.
SURVEYORS - ENGINEERS - PLANNERS
7900 GLADES ROAD, SUITE 100
BOCA RATON, FLORIDA 33434 - (561)392-1991
CERTIFICATE OF AUTHORIZATION NO. LB3591

13
SHEET 2 OF 2



- LEGEND / ABBREVIATIONS**
- CENTERLINE
 - CCR - CERTIFIED CORNER RECORD
 - E - EASTING (WHEN USED WITH COORDINATES)
 - LAE - LIMITED ACCESS EASEMENT
 - LB - LICENSED BUSINESS
 - L.W.D. - LAKE WORTH DRAINAGE DISTRICT
 - N - NORTHING (WHEN USED WITH COORDINATES)
 - O.R.B. - OFFICIAL RECORD BOOK
 - (P) - DEL MAR PLAZA SUB DIVISION NO. 1, PLAT BOOK 41, PAGES 108 THROUGH 110
 - P.B.C.R. - PALM BEACH COUNTY RECORDS
 - P.B. - PLAT BOOK
 - PG. - PAGE
 - UE - UTILITY EASEMENT
 - PRM - DENOTES PERMANENT REFERENCE MONUMENT 4" x 4" x 24" CONCRETE MONUMENT WITH ALUMINUM DISK STAMPED "C&W PRM LB3591"
 - ▲ PRMND - DENOTES PERMANENT REFERENCE MONUMENT SET NAIL AND DISK STAMPED "PRM" LB 3591
 - △ - PALM BEACH COUNTY CONTROL POINT

NOTES
COORDINATES, BEARINGS AND DISTANCES

COORDINATES SHOWN ARE GRID
DATUM = NAD 83 (90/98 ADJUSTMENT)
ZONE = FLORIDA EAST
LINEAR UNIT = US SURVEY FEET
COORDINATE SYSTEM 1983 STATE PLANE
TRANSVERSE MERCATOR PROJECTION
ALL DISTANCES ARE GROUND, UNLESS NOTED OTHERWISE
SCALE FACTOR = 1.000029214
GROUND DISTANCE X SCALE FACTOR = GRID DISTANCE
BEARINGS AS SHOWN HEREON ARE GRID DATUM,
NAD 83 (90/98 ADJUSTMENT), FLORIDA EAST ZONE.